

**Railways**

Master Planning and Management Consulting

**Rails connect people,  
not just regions.**



## Our Business Line Mobility

Worldwide, transport systems are facing profound change characterized by increasing digitalization, a growing awareness of environmental issues and the integration of different private and public mobility options into a multimodal network.

Our mobility experts draw on profound expertise in both classical planning and the development and implementation of innovative mobility solutions.

In view of the upheavals in rail traffic, new network planning and master plans are absolutely imperative in order to meet current and future requirements as needed.

We advise government departments, local authorities, transport companies and providers of mobility services around the world in drawing up integrated plans and concepts, and accompany the process of putting these into effect.

### Our Business Line Mobility focuses on the following key areas:

- Intelligent Transportation Systems (ITS)
- Logistics
- Sustainable Urban Mobility Planning (SUMP)
- New Mobility
- Railways
- Technical Advisory and Program Management



**Shaping the future! Benefit from our long-standing experience – from the idea and the investment decision through to the operation of mobility infrastructures.**





## Our Railways services

In freight and passenger transport, rail represents a low-emission, energy-efficient and fast alternative to road and air transport.

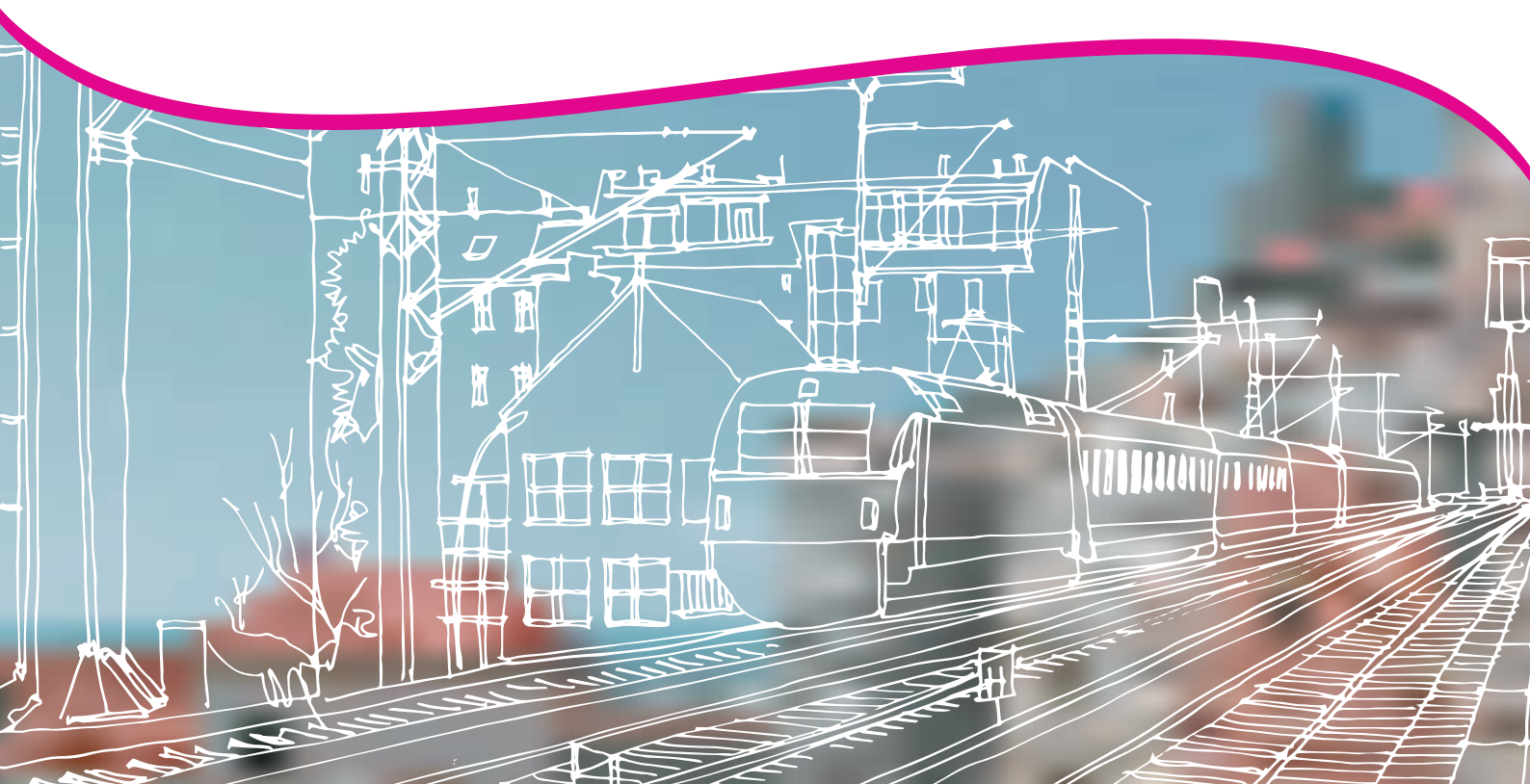
### **In many countries, rail transport is facing huge challenges:**

- Infrastructures are having to be digitalized, fundamentally modernized and extended.
- State structures in rail transport are increasingly being privatized.
- Financing is becoming ever more complex.
- Authorities have not sufficiently grasped and addressed the regulatory framework and current developments.
- In some countries, the rail network is still essentially in the process of being set up.

Our interdisciplinary team looks back on many years of experience in rail transport. Our engineers work closely with business specialists, economists and organizational experts, enabling us to look at challenges from different perspectives and work out the best possible solution for our clients.

### **Our services in detail:**

- Advice on corridor development, cross-border traffic and connections to ports
- Master planning, feasibility studies and operating models for railway networks
- Integration and linking of urban multimodal mobility networks
- Risk assessment, economic feasibility studies and concepts for state regulation
- Support of public-private partnerships, development and organization of railway companies





**Dornier Consulting International GmbH**  
is a member of the Dornier Group

We provide infrastructure services in the following sectors:

- Plant Engineering
- Operation & Maintenance
- Energy & Environment
- Renewable Energies
- Aviation
- Mobility
- Nuclear Services
- Real Estate
- Water

Visit us at:

[www.dornier-group.com](http://www.dornier-group.com)



Managing Directors: Dr. Ralf Gilgen, Christian Daumann, Patrick Rauh

Charlottenstr. 18 · 10117 Berlin · Germany

Phone: +49 30 253991-0 · Fax: +49 30 253991-99

info@dornier-consulting.com

# KISS – Keep it smart and simple!

**Dr. Martin Both**  
Head of Business Line Mobility

